

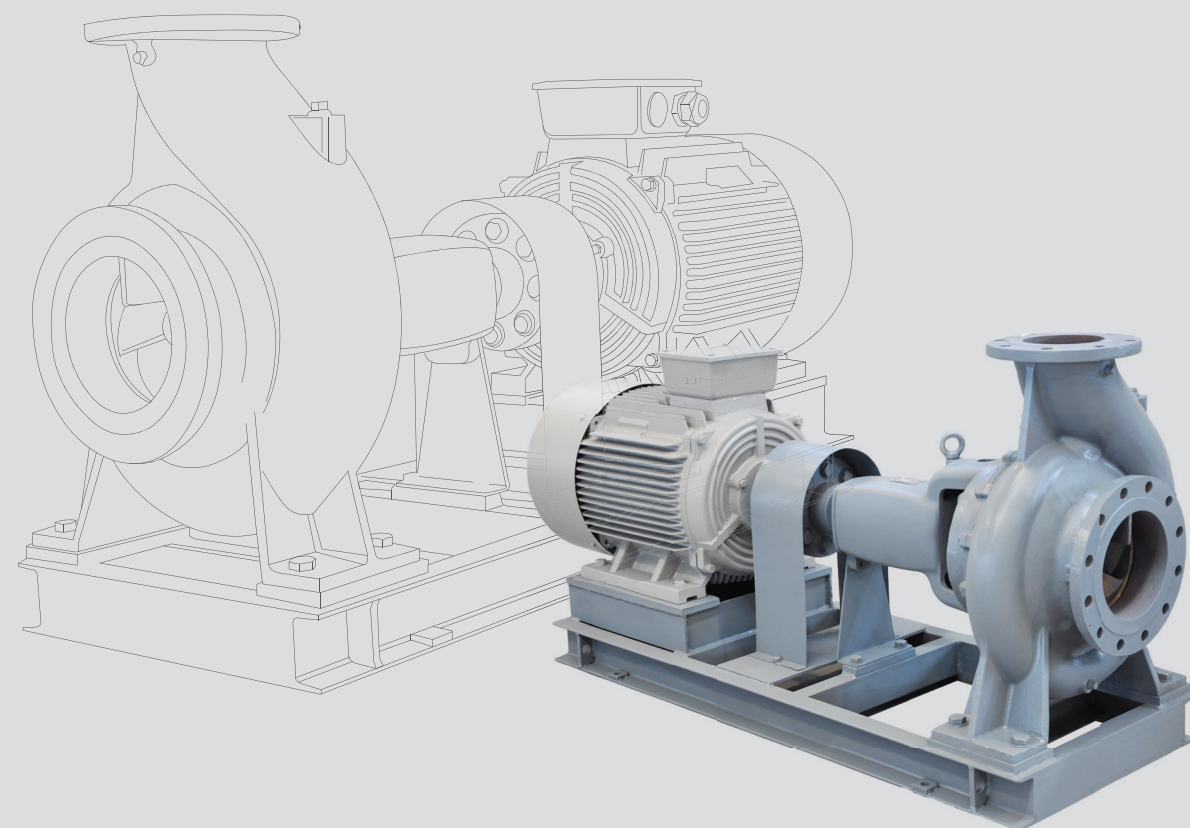
FSC END SUCTION VOLUTE PUMP



EBARA MACHINERY (CHINA) CO., Ltd.

Contact address: Standard Pump Factory
NO.66,Futao Road,Fushan New&Hi-Tech Industry Zone,Yantai,PRC
TEL: +86-535-6988830
FAX: +86-535-6988877

Head Office:
Room303,TowerA,Fortune Plaza
No.7,Dongsanhuan Zhong Road,Chaoyang District,Peking 100020,PRC
TEL: +86-010-65309990
FAX: +86-010-65308516



EBARA MACHINERY (CHINA) CO., LTD.



Ebara Machinery (China) Co., Ltd

As the wholly owned subsidiary company of Ebara Subsidiary Corporation, Ebara Machinery (China) devotes itself to the expansion of Ebara's wind and hydraulic power business in China and supplying of advanced general pump, cooling tower, water supply system, heat exchanger and water treatment products and other services with high quality for clients.

Ebara is famous for producing advanced water pump, water supply system, cooling tower and heat exchanger. As a combined environment engineering enterprise, Ebara is staffed with over 15000 employees with its business covered 24 countries across the world, there are more than 107 production bases, branches and R&D research centers. By now, Ebara has made contributions to different fields and is enjoying reliability from tens of thousands of clients across the world.

Ebara Machinery (China) would make great efforts to promote the development of local clients; And as a part of Ebara Corporation, our mission is to offer strong strategic support to Ebara.

EBARA

MACHINERY

(CHINA)

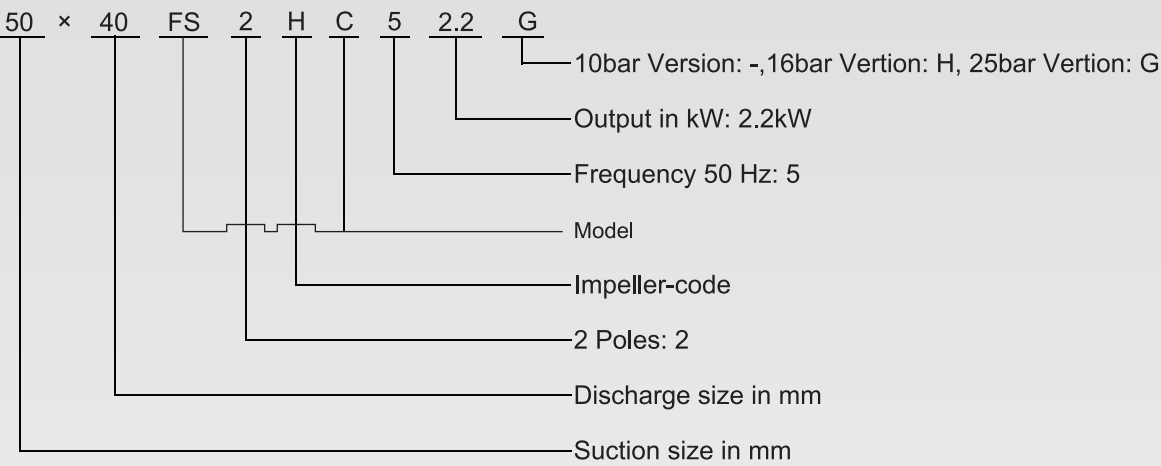
Index

■ Index	1
■ Model Code	2
■ Specification	2-3
■ Selection Chart	4
■ Sectional View Of Pump	5
■ Sectional View Of Mechanical Seal	6-7
■ Dimension-Bare Shaft Pump	8-13

NOTE:ALL SPECIFICATIONS ARE SUBJECT TO CHANGE WITHOUT NOTICE

Model Code & Specification

Model Code



Specification

PUMP

Maximum working pressure		10bar(10.2kgf/cm ²)	16bar(16.3kgf/cm ²)	25bar(25.5kgf/cm ²)
Liquid Handled	Name	clean water(PH: 5.8~8.6)		
	Temperature	0~100℃(※1)		
Construction	Impeller	Enclosed		
	Shaft seal	Mechanical seal		Mechanical seal (balanced)
	Sealing	Self flushing		
	Bearing	Sealed ball bearing		
Flange		JIS 10K RF	JIS 16K RF	JIS 20K RF
Material	Casing	Cast Iron	Ductile Cast Iron/Cast Iron(※2)	Ductile Cast Iron
	Impeller	Bronze Casting		
	Shaft	Stainless steel		
	Mechanical seal	Ceramic/Carbon/NBR		SiC/Carbon/FPM

Note: ※1.Other liquid,minimum temperature up to -10℃

※2.The model of cast iron pump: 100×65FS2KCH,150×100FS2KCH,150×100FS4NCH

200×150FS4LCH/FS4NCH,250×200FS4LCH/FS4NCH

Specification

Motor

Number of poles	2 poles	4 poles
Synchronous speed	3000min ⁻¹	1500min ⁻¹
Phase	3 phase	
Voltage	380V±10%	
Type	Totally enclosed fan cooled(indoors)	
Protection degree	IP55	
Frequency	30~50Hz	

Optional:

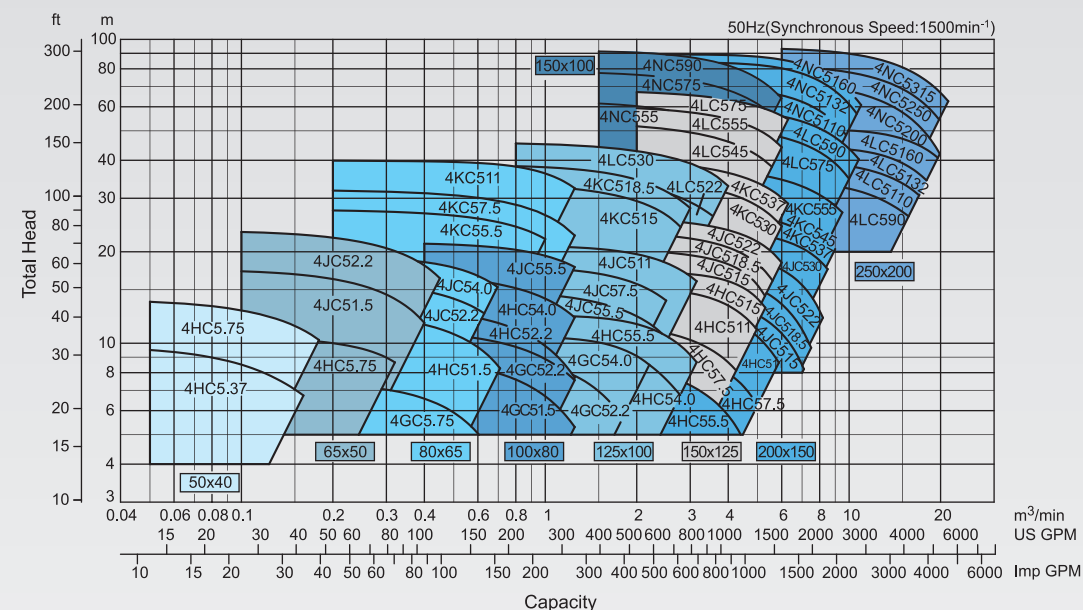
- Totally enclosed fan cooled(outdoors)
- Varying frequency running(0~50Hz)
- Other types of motor that user require

Accessories

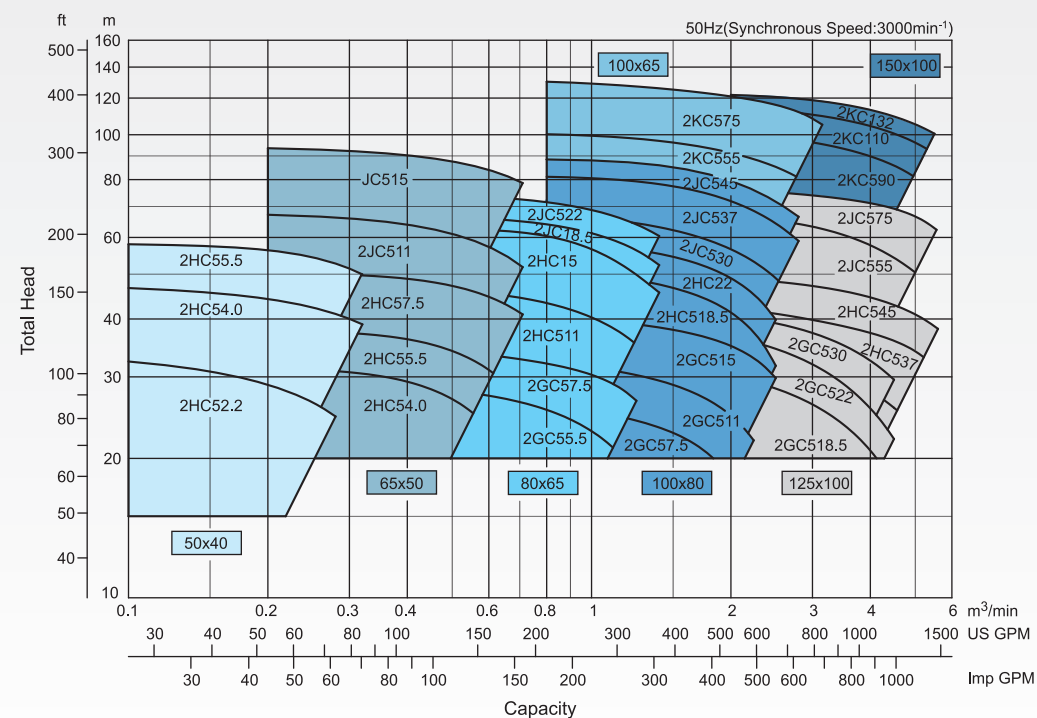
Standard	Optional
Common base	JIS companion flange
Coupling	Disc couplings
Coupling guard	

Selection Chart

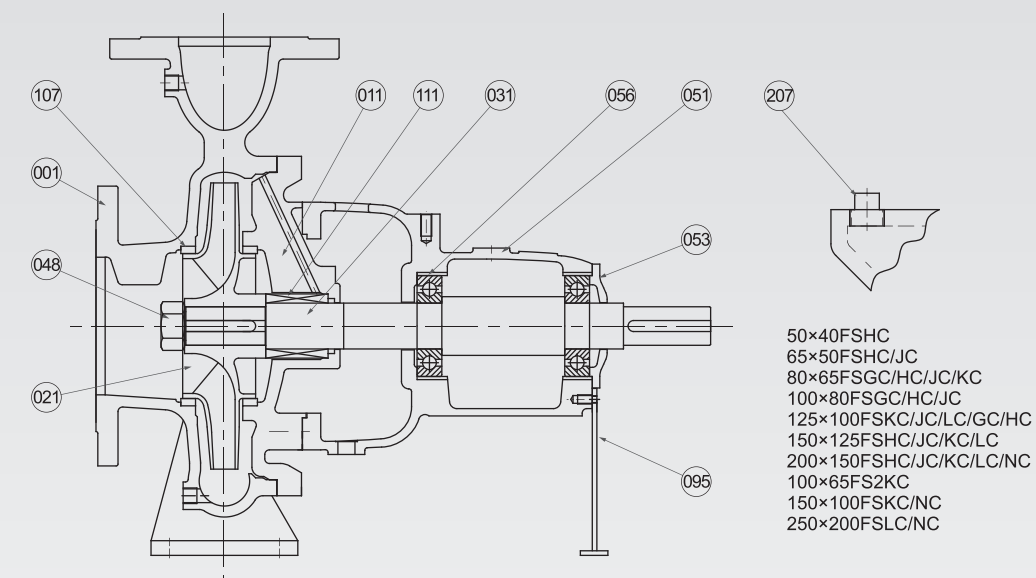
■ 4P



■ 2P



Sectional View Of Pump

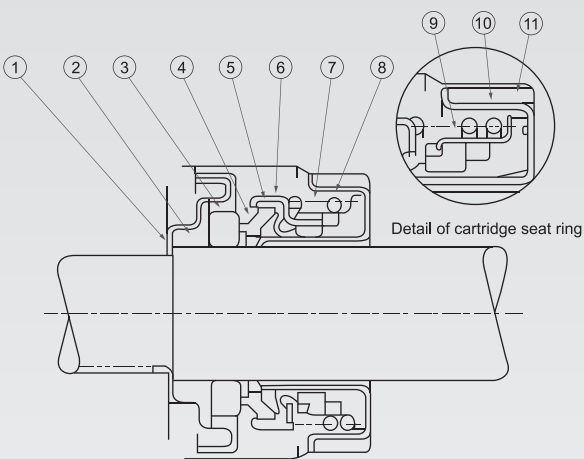


Part No.	Part Name	10bar	16bar	25bar	Qty/Unity
		Material			
207	Plug	Steel			1
111	Mechanical Seal	MS1/MS2		MS3	1
107	Lining Ring	Brone			2
095	Support	Steel			1
056	Ball Bearing	—			2
053	Bearing Cover	Cast Iron			1
051	Bearing Housing	Cast Iron			1
048	Impeller Nut	Brass			1
031	Shaft	Stainless Steel			1
021	Impeller	Brone			1
011	Casing Cover	Cast Iron			1
001	Casing	Cast Iron	Ductile Cast Iron/Cast Iron	Ductile Cast Iron	1

Note: *1.Details in the sectional view of mechanical seal
 *1.16 bar pump-type in cast iron:
 100×65FS2KCH, 150×100FS2KCH, 150×100FS4NCH
 200×150FS4LCH/FS4NCH, 250×200FS4LCH/FS4NCH
 The others in ductile cast iron

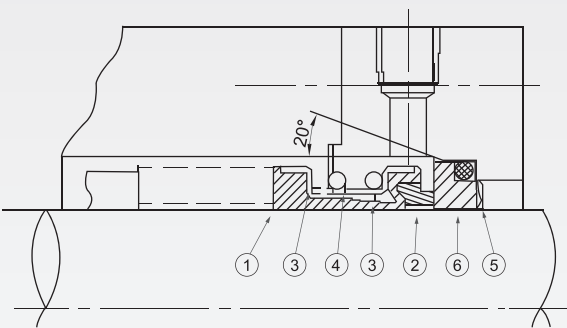
Sectional View Of Mechanical Seal

Model MS1



Part No.	Part Name	Material	Qty/Unity
1	Case	304 Stainless Steel	1
2	Cup Gasket	NBR	1
3	Mating Ring	Ceramic	1
4	Seal Ring	Carbon	1
5	Bellows	NBR	1
6	Case	304 Stainless Steel	1
7	Drive Ring	304 Stainless Steel	1
8	Coil Spring	304 Stainless Steel	1
9	Spring Holder	304 Stainless Steel	1
10	Cartridge	304 Stainless Steel	1
11	Seat Ring	NBR	1

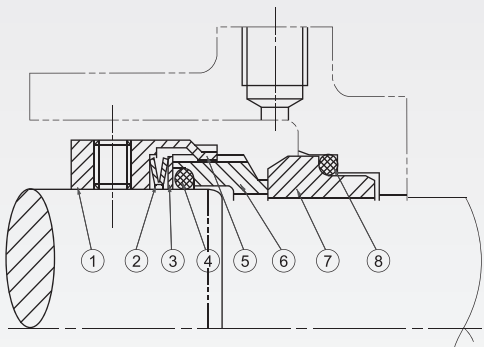
Model MS2



Part No.	Part Name	Material	Qty/Unity
1	Bellows	NBR	1
2	Mating Ring	Carbon	1
3	Drive Ring	NBR	1
4	Coil Spring	316 Stainless Steel	1
5	Cup Gasket	NBR	1
6	Sealing Ring	Ceramic	1

Note: Model MS1(10bar, 16bar)
125×100FSJC, LC
150×125FSHC, JC, KC, LC
200×150FSHC, JC, KC, LC, NC
100×65FSKC, 150×100FSKC, NC
250×200FSLC, NC

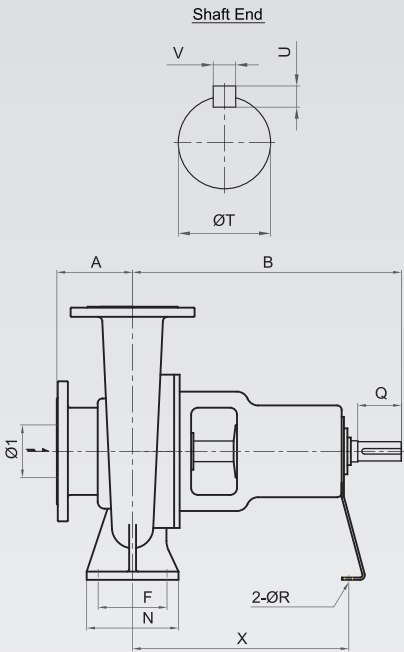
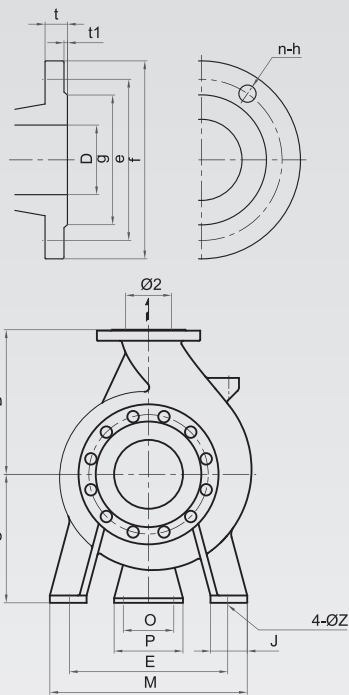
Model MS3



Part No.	Part Name	Material	Qty/Unity
1	Retainer	316 Stainless Steel	1
2	Spring	316 Stainless Steel	1
3	Thrust ring	316 Stainless Steel	1
4	Seat O-ring	FPM	1
5	Drive Ring	316 Stainless Steel	1
6	Balanced Face	Carbon	1
7	BP type seat	Sic	1
8	Seat O-ring	FPM	1

Note: 58B-type mechanical seal can be applied to all pump model

Dimension-Bare Shaft Pump



Dimension-cast iron flange(JIS 16K RF)

D mm	f mm	e mm	g mm	t1 mm	t mm	n -	h mm
40	140	105	81	2	20	4	19
50	155	120	96	2	20	8	19
65	175	140	116	2	22	8	19
80	200	160	132	2	24	8	23
100	225	185	160	2	26	8	23
125	270	225	195	2	26	8	25
150	305	260	230	2	28	12	25
200	350	305	275	2	30	12	25
250	430	380	345	2	34	12	27

Dimension-cast iron flange(JIS 10K RF)

D mm	f mm	e mm	g mm	t1 mm	t mm	n -	h mm
40	140	105	81	2	20	4	19
50	155	120	96	2	20	4	19
65	175	140	116	2	22	4	19
80	185	150	126	2	22	8	19
100	210	175	151	2	24	8	19
125	250	210	182	2	24	8	23
150	280	240	212	2	26	8	23
200	330	290	262	2	26	12	23
250	400	355	324	2	30	12	25

Dimension-Ductile cast iron flange(JIS 16K RF)

D mm	f mm	e mm	g mm	t1 mm	t mm	n -	h mm
40	140	105	81	2	16	4	19
50	155	120	96	2	16	8	19
65	175	140	116	2	18	8	19
80	200	160	132	2	20	8	23
100	225	185	160	2	22	8	23
125	270	225	195	2	22	8	25
150	305	260	230	2	24	12	25
200	350	305	275	2	26	12	25
250	430	380	345	2	28	12	27

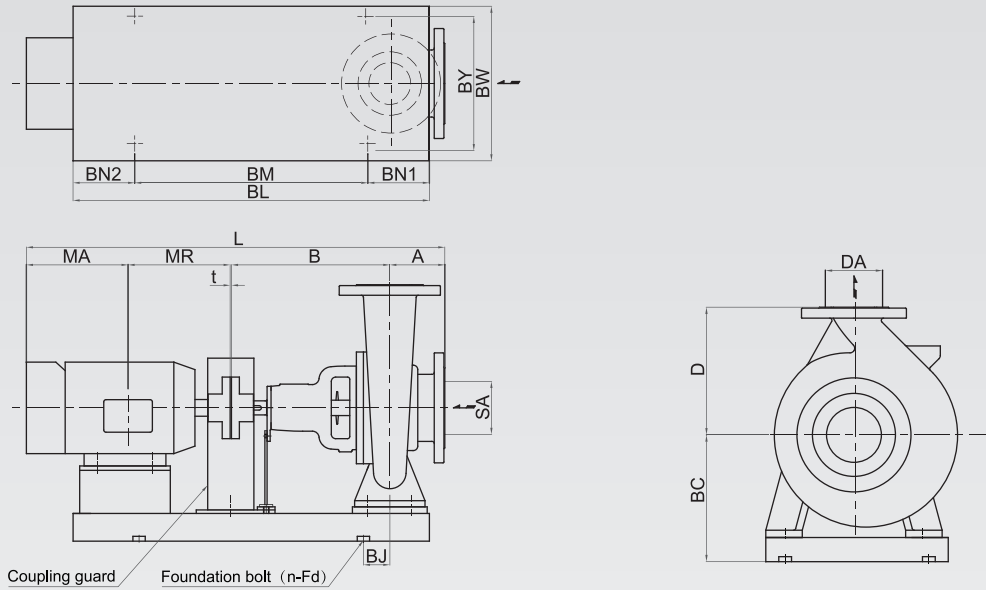
Dimension-Ductile cast iron flange(JIS 20bar RF)

D mm	f mm	e mm	g mm	t1 mm	t mm	n -	h mm
40	140	105	81	2	18	4	19
50	155	120	96	2	18	8	19
65	175	140	116	2	20	8	19
80	200	160	132	2	22	8	23
100	225	185	160	2	24	8	23
125	270	225	195	2	26	8	25
150	305	260	230	2	28	12	25
200	350	305	275	2	30	12	25
250	430	380	345	2	34	12	27

Dimension-Bare Shaft Pump

Model	Size		Pump														Shaft			
	φ 1	φ 2	A	B	C	D	E	F	J	M	N	O	P	R	X	Z	T	Q	U	V
	units:mm																			
50×40FSHC	50	40	80	360	160	180	190	70	50	240	100	110	150	17	285	15	24	50	7	8
65×50FSHC	65	50	100	360	160	180	212	70	50	265	100	110	150	17	285	15	24	50	7	8
65×50FSJC	65	50	100	360	180	225	250	95	65	320	125	110	150	17	285	15	24	50	7	8
80×65FSGC	80	65	100	360	160	180	212	70	50	265	100	110	150	17	285	15	24	50	7	8
80×65FSHC	80	65	100	360	160	200	212	40	50	265	100	110	150	17	285	15	24	50	7	8
80×65FSJC	80	65	100	360	180	225	250	95	65	320	125	110	150	17	285	15	32	80	8	10
80×65FSKC	80	65	125	470	225	280	315	120	80	400	160	110	150	17	370	20	32	80	8	10
100×80FSGC	100	80	100	360	160	200	212	95	65	280	125	110	150	17	285	15	24	50	7	8
100×80FSHC	100	80	100	360	180	225	250	95	65	320	125	110	150	17	285	15	32	80	8	10
100×80FSJC	100	80	100	360	200	250	280	120	80	360	160	110	150	17	285	19	32	80	8	10
125×100FSGC	125	100	125	360	180	250	250	95	65	320	125	110	150	17	285	15	32	80	8	10
125×100FSHC	125	100	125	360	225	280	315	120	80	400	160	110	150	17	281	15	32	80	8	10
125×100FSJC	125	100	140	470	225	280	315	120	80	400	160	110	150	17	370	19	38	80	8	10
125×100FSKC	125	100	140	470	250	315	315	120	80	400	160	110	150	17	370	19	32	80	8	10
125×100FSLC	125	100	140	530	280	355	400	150	100	500	200	110	150	17	370	24	42	110	8	12
150×125FSHC	150	125	140	470	250	315	315	120	80	400	160	110	150	17	370	19	32	80	8	10
150×125FSJC	150	125	140	470	250	355	315	120	80	400	160	110	150	17	370	19	32	80	8	10
150×125FSKC	150	125	140	530	280	355	400	150	100	500	200	110	150	17	370	24	42	110	8	12
150×125FSLC	150	125	140	530	315	400	400	150	100	500	200	110	150	17	370	24	42	110	8	12
200×150FSHC	200	150	160	470	280	355	400	150	100	500	200	110	150	17	370	24	32	80	8	10
200×150FSJC	200	150	160	530	280	375	400	150	100	500	200	110	150	17	370	24	42	110	8	12
200×150FSKC	200	150	160	670	315	400	450	150	100	550	200	140	180	19	500	24	48	110	9	14
250×200FSLC	250	200	180	670	385	560	560	250	100	660	315	140	180	19	500	24	60	110	11	18
100×65FSKC	100	65	125	360	225	280	315	120	80	400	160	110	150	17	285	20	38	80	8	10
150×100FSKC	150	100	140	530	250	315	315	120	80	400	160	90	120	15	373	19	42	95	8	12
150×100FSNC	150	100	180	670	375	450	450	150	100	550	200	140	180	19	500	24	48	110	9	14
200×150FSNC	200	150	184	670	375	560	450	150	100	550	200	140	180	19	500	24	60	110	11	18
250×200FSNC	250	200	200	820	435	630	560	250	100	660	315	160	200	19	630	27	74	125	12	20

Dimension-Pump 2P



units:mm																																								
Model	Output kW	Size		Pump			Wt (kg)		Motor			Wt kg	Common Base								Wt kg	Total size		Wt (kg)																
		SA	DA	A	B	D	BC	10/16bar	25bar	Frame	MR		MA	BJ	BL	BM	BN1	BN2	BY	BW		n-φFd	t	L	10/16bar	25bar														
50×40FS2HC	2.2	50	40	80	360	180	240	37	44	90L	168.5	207.5	26	55	700	460	120	260	290	4	26	3	819	89	96															
	4.0									112M	200	193.5	40		740	500		280	310		28		836.5	105	112															
	5.5									132S	239	241	56		52.5								923	121	128															
65×50FS2HC	4.0	65	50	100	360	180	240	42	50	112M	200	193.5	40	55	825	575	130	290	320	40	4	856.5	122	130																
	5.5									132S	239	241	56	62								52.5				943	138	146												
	7.5																									144	152													
65×50FS2JC	11	65	50	100	360	225	280	49	59	160M	323	291	96	82.5	970	650	160	350	380	55		1077	200	210																
	15												106										210	220																
80×65FS2GC	5.5	80	65	100	360	180	240	39	47	132S	239	241	56	52.5	835	575	130	290	320	40	3	943	135	143																
	7.5												62											141	149															
80×65FS2HC	11	80	65	100	360	200	260	48	58	160M	323	291	96	72.5	920	620	150	350	380	42.5	3	1077	186.5	196.5																
	15												106											196.5	206.5															
80×65FS2JC	18.5	80	65	100	360	225	280	60	72	160L	345	329	125	82.5	970	650	160	350	380	55	4	1137	240	252																
	22									180M	351.5	331.5	152		980	660		390	420				273																	
100×80FS2GC	7.5	100	80	100	360	200	260	49	59	132S	239	241	62	52.5	835	575	130	290	320	40	4	943	151	161																
	11																																							
	15									160M	323	291	96	72.5	920	620	150	350	380				42.5	1077	187.5	197.5	207.5													
100×80FS2HC	18.5	100	80	100	360	225	280	62	74	160L	345	329	125	82.5	970	650	160	350	380	55	4	1137	242	254																
	22									180M	351.5	331.5	152		980	660		390	420	275																				
100×80FS2JC	30	100	80	100	360	250	300	70	84	200L	395.5	376.5	229	85	1070	710	180	420	450	57	4	1236	356	370																
	37																																							
	45																																				372	386		
125×100FS2GC	18.5	125	100	125	360	250	280	60	72	225M	414.5	400.5	307	82.5	1110	750	160	460	490	74	3	1275	451	465																
	22																																							
	30																																1162	240	252					
125×100FS2HC	37	125	100	125	360	280	320	70	84	200L	395.5	376.5	229	80	1060	720	170	424	460	65	4	1261	380	394																
	45																																							
										225M	414.5	400.5	307			1090		750	460	496		53	1304	430	444															
125×100FS2JC	55	125	100	140	470	280	350	108	130	250M	483.5	433.5	378	75	1290	950		486	524	69	4-φ19	1531	555	577																
	75																																							
										392																					83.5	1590	741.5	763.5						
100×65FS2KC	55	100	65	125	360	280	375	106	106	250M	483.5	433.5	378	105	1220	820	200	515	565	4-φ24	4	1406	584	584																
	75																																							
										405																						102	1465	758	758					
150×100FS2KC	75	150	100	140	530	315	420	146	146	280S	539.5	436.5	550	140	1490	1010	240	590	630	124	4	1650	696	696																
	90									280M	539.5	487.5	570																											
	110									315S	559	554	740																											
	132									315M	584.5	708.5	855																											

Dimension-Pump 4P

units:mm																											
Model	Output	Size		Pump				Wt (kg)		Motor			Wt	Common Base								Wt	Total size		Wt (kg)		
	kW	SA	DA	A	B	D	BC	10/16bar	25bar	Frame	MR	MA	kg	BJ	BL	BM	BN1	BN2	BY	BW	n-φ Fd	kg	t	L	10/16bar	25bar	
50×40FS4HC	0.37 0.75	50	40	80	360	180	240	37	44	71M 80M	120 140	130 148	12 17.5	55	630 650	390 410	120		260 280	290 310		24			693	73	80
65×50FS4HC	0.75	65	50	100	360	180	240	42	50	80M	140	148	17.5	55	650	410			280	310		26			751	85.5	93.5
65×50FS4JC	1.5 2.2	65	50	100	360	225	260	49	59	90L 100L	168.5 193	207.5 197.5	27 33	42.5	710 750	470 510	120		320 310	350 340		30			839	106	116
80×65FS4GC	0.75	80	65	100	360	180	240	39	47	80M	140	148	17.5	55	650	410			280	310		26			751	82.5	90.5
80×65FS4HC	1.5	80	65	100	360	200	240	48	58	90L	168.5	207.5	27		710	470	160		280	310		28			839	103	113
80×65FS4JC	2.2 4.0	80	65	100	360	225	260	60	72	100L 112M	193 200	197.5 193.5	33 45	42.5	750 760	510 520			310 320	340 350		31			853.5	124	136
80×65FS4KC	7.5 11	80	65	125	470	280	325	108	130	132M 160M	258 323	267 291	73 103	65	970 1050	650 710	160		390	420		49			1123	230	252
100×80FS4GC	1.5 2.2	100	80	100	360	200	240	49	59	90L	168.5	207.5	27		710	470			280	310		28			839	134	144
100×80FS4HC	2.2 4.0	100	80	100	360	225	260	62	74	100L	193	197.5	33	42.5	750 710		120		310 320	340 350	4-φ 15	31	3		853.5	126	138
100×80FS4JC	4.0 5.5	100	80	100	360	250	280	70	84	112M	200	193.5	45		750 770	520 530			350	380		32			856.5	139	151
125×100FS4GC	2.2 4.0	125	100	125	360	250	260	60	72	132S 100L	239 193	241 197.5	61 33	35	855 750	595 510	130		310	340		40			943	171	185
125×100FS4HC	4.0 5.5	125	100	125	360	280	303	70	84	112M	200	193.5	45	42.5	760 770	520 490	120		320	350		32			881.5	137	149
125×100FS4JC	5.5 7.5	125	100	125	360	280	303	70	84	132S	239	241	61	48	850 970	570	140		422	454		41			968	172	186
125×100FS4KC	11	125	100	140	470	280	325	108	130	132M 160M	258 323	267 291	73 103	65	1050 710	650 170	160		390	420		47			1093	216	238
125×100FS4LC	15 22	125	100	140	470	315	350	128	154	160L	345	329	130	85	1090	730	180		390	420		55			1287	313	339
150×125FS4HC	7.5 11	150	125	140	470	315	350	120	144	180L 200L	370.5 395.5	347.5 376.5	180 238	85	1220 1260	820 840	200		480	520	4-φ 19	77	4		1388	425	459
150×125FS4JC	15	150	125	140	470	315	350	120	144	132M 160L	258 345	267 329	73 130	65	970 1090	650 730	160					50			1138	243	267
150×125FS4KC	18.5 22	150	125	140	470	355	400	168	202	160M 180L	323 351.5	291 331.5	103 165	85	1090 1140	730 760	180		390	420	4-φ 15	55	3		1287	305	329
150×125FS4LC	30 37	150	125	140	530	355	435	205	246	180L 200L	370.5 395.5	347.5 376.5	180 238	95	1140 1260	760 840	190					57			826	350	376
200×150FS4HC	5.5 7.5	200	150	160	470	355	380	137	164	200L 225S	395.5 432	376.5 388	238 298	100	1260 1330	840 890	210		480	520		83			1446	491	525
200×150FS4JC	18.5 22	200	150	160	530	375	400	183	220	225M 250M	444.5 483.5	400.5 433.5	322 410	105	1330 1550	890 1050	200		480	520	4-φ 19	88	4		1519	615	656
200×150FS4KC	75	200	150	160	530	375	400	183	220	280S	539.5	436.5	555	125	1460	980			510	550		100			1591	715	756
200×150FS4LC	5.5 7.5	200	150	160	470	355	380	137	164	132S 132M	239 258	241 267	61 73	45	990 1050	670 730	160		490	520	4-φ 15	60			1113	258	285
200×150FS4JC	11 15	200	150	160	530	375	400	183	220	160M 180L	323 351.5	291 331.5	103 165	75	1170 1220	790 820	190		480	520		71			1158	270	297
200×150FS4KC	18.5 22	200	150	160	530	375	400	183	220	160L 180L	345 370.5	329 347.5	130 180	85	1070 1220	730 820	170		480	520		74			1247	311	338
200×150FS4LC	30 37	200	150	160	530	375	400	183	220	200L 225S	395.5 432	376.5 388	238 298	95	1260 1470	840 990	210		480	520	4-φ 19	83			1408	440	472
250×200FS4HC	45 55	250	200	200	670	400	435	222	266	225M 250M	444.5 483.5	400.5 433.5	322 410	120	1550 1550	1050 1045	250		530	570		94			1654	614	658
250×200FS4JC	55	250	200	200	670	400	435	222	266	250M	483.5	433.5	410	130	1545	1045	250		530	570		103			1679	638	682
250×200FS4KC	90	250	200	200	670	400	435	222	266	280S	539.5	436.5	555	135	1650	1045	250		530	570		120			1771	895	968
250×200FS4LC	75 90	250	200	200	670	400	435	222	266	280M	539.5	436.5	555	135	1650	1045	250		530	570		142			1830	1062	1135
250×200FS4JC	110	250	200	200	670	400	435	222	266	280M	539.5	436.5	555	135	1650	1045	250		530	570		142			1881	1117	1190
250×200FS4KC	132 160	250	200	200	670	400	435	222	266	315S 315M	589 614.5	554 708.5	750 960	185	1820	1220	300		680	720	4-φ 24	183	4		2001	1421	1421
250×200FS4LC	185 200	250	200	200	670	400	435	222	266	315L	614.5	708.5	1070	155	2030	1370	330		680	720	6-φ 26	212			2181	1521	1521
250×200FS4JC	250 315	250	200	200	670	400	435	222	266	280M 355L	539.5 704	436.5 816	555 1900	105	1710	1150	280		650	690		154			1881	1269	1269
250×200FS4KC	110 132	250	200	200	670	400	435	222	266	315S	589	554	750	125	1880	1280	300		680	720		191			1997	1446	1446
250×200FS4LC	160 185	250	200	200	670	400	435	222	266	315M	614.5	708.5	1070	155	2030	1370	330		680	720	6-φ 26	212			2177	1546	1546
250×200FS4JC	200 250	250	200	200	670	400	435	222	266	315L	614.5	708.5	1070	155	2030	1370	330		680	720	6-φ 26	212			2177	1546	1546
250×200FS4KC	315	250	200	200	670	400	435	222	266	355L	704	816	1900	185	2120	1400	360		780	830	6-φ 28	275			2544	2597	2597

MEMO

A faint, light gray map of China is centered on the page. The map shows the country's outline and internal provincial boundaries. It is positioned in the lower half of the page, below the blue header bar.

MEMO

A faint, light gray map of China is centered on the page. The map shows the country's outline and internal provincial boundaries. It is positioned in the lower half of the page, below the blue header bar.